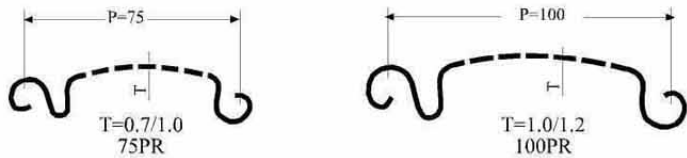


CHUNG TAI PERFORATED (TRANSPARENT) SHUTTER

- Shutter curtain : • Made of cold rolled steel slats with punched holes in a systematic sequence
- Material : • Stainless steel SUS 316 / SUS 304, hot dip galvanized mild steel
- Size : • Width up to 20000mm and height up to 10000mm
- Model No. (Types of slat):



- Operation : • Manual operated (vertically sliding) • Electric operated (vertically sliding)
- Special Feature : • Electric operated (laterally sliding) • Electric operated (horizontally sliding)
- : • Built with curtain holdfast device for windload and impact resistance retaining
- : • Built with wicket door



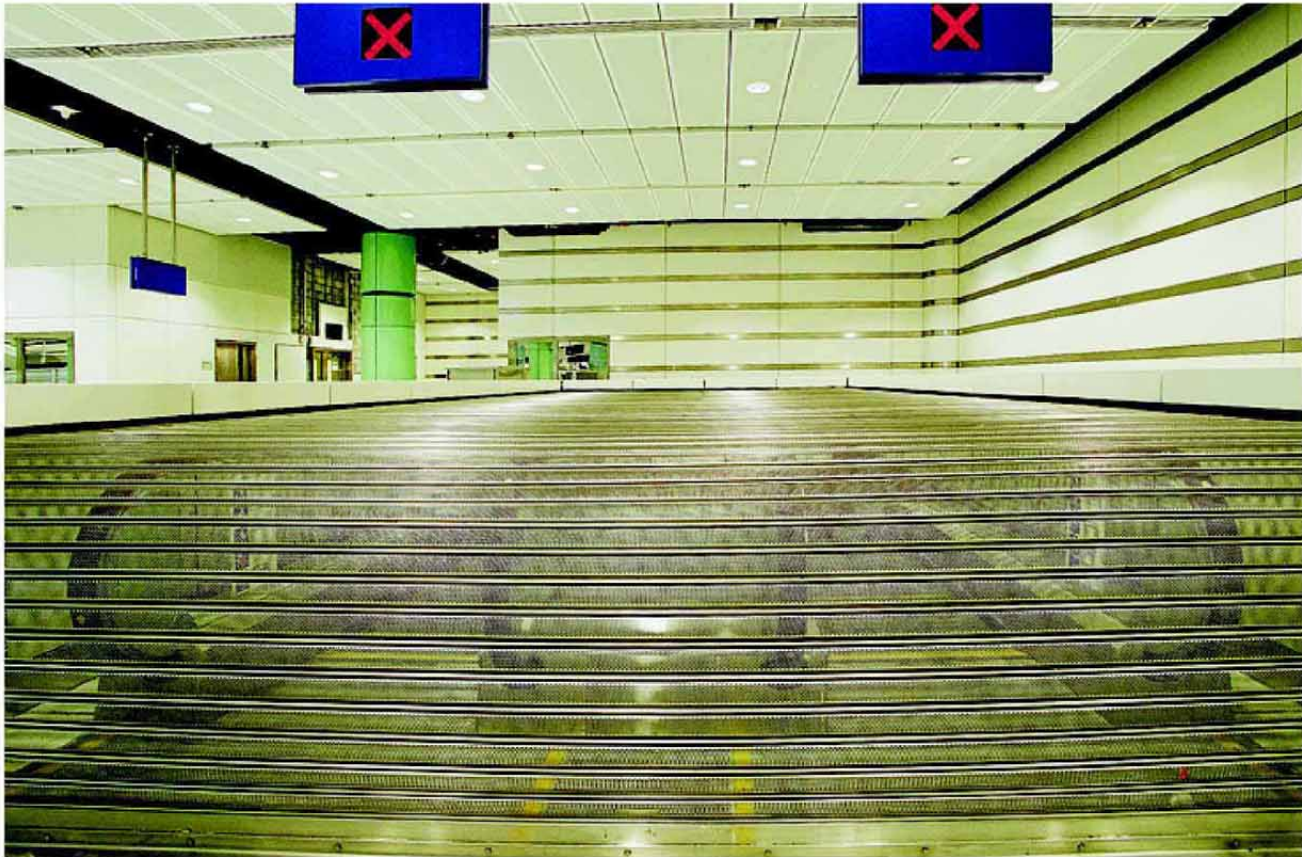
Photo shop with a stainless steel perforated security roller shutter located in Tseung Kwan O MTR Station.



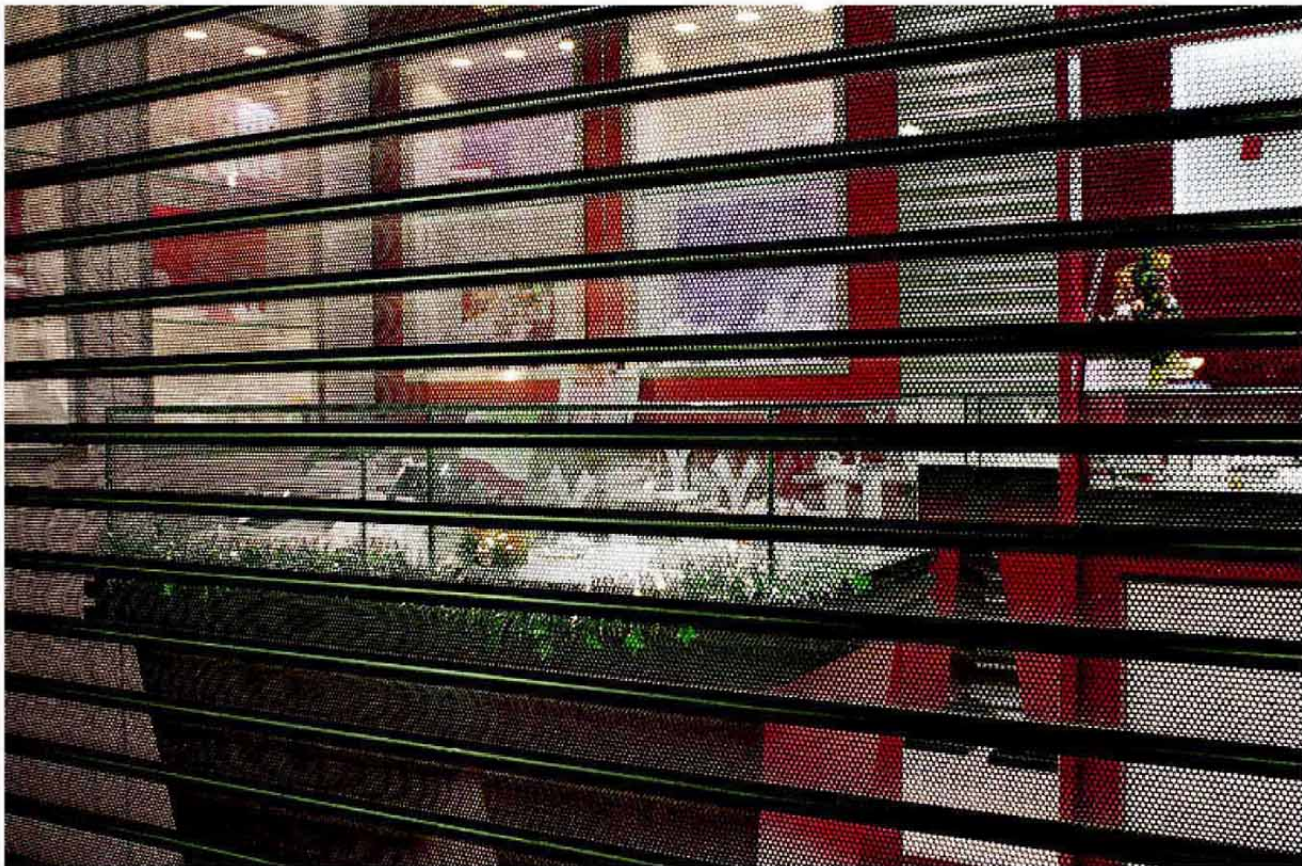
A jewelry store with a perforated security roller shutter located in East Tsim Sha Tsui station.



CHUNG TAI PERFORATED (TRANSPARENT) SHUTTER



5260 (W) x 14000 (L) Perforated Horizontally Sliding shutter in Lok Ma Chau Terminus



A jewelry store with a perforated security roller shutter located in East Tsim Sha Tsui station.